

MIDEO SYSTEMS INC.



Efficiently Manage Latent Cases

Meet ISO/SWGFASST Guidelines

Support Best Practices

Use Consistent Terminology

Automate Case Notes

Share Case Information
w/Multiple Sites

Perform Peer Verification/Review

Integrate with AFIS, LIMS and RMS



mideo
LATENTWORKS
e-LATENT CASE MANAGEMENT



Mideo Systems Inc., 15206 Transistor Lane, Huntington Beach, CA. 92649
Phone: (714) 379-3760 | Toll Free (800) 258-1066 | Fax (714) 890-1339
www.mideosystems.com

CASE MANAGEMENT

Mideo has developed LATENTWORKS e-Latent Case Management Software that combines the various processes that make up the latent print workflow into one consistent, manageable, electronic environment. LATENTWORKS Case Management software addresses the process of gathering all information from a case, linking the evidence together within a case, establishing relationships to evidence from other cases, controlling the movement of the case through the agency from open to close, tracking all types of data gathered from the case.

New documentation standards make it critical for latent departments to refine the process of how their work is accessed, processed, communicated and documented throughout the department. It is now necessary to have more consistency from examiner to examiner. It is no longer acceptable to allow each examiner to “do it their own way”. Thorough and comprehensive documentation is not only necessary but is now more important than ever.

LATENTWORKS is a network-based software solution that provides all of the necessary imaging and data management tools for consistent and efficient latent case management. In addition to secure image management, documentation and charting tools, also included is an embedded comparison workspace.

LATENTWORKS features include:

- Automated Service Request Management - eMessaging
- Contemporaneous Documentation - ACE-V
- On-screen Comparison & Charting Tools
- AFIS Communication/Submission
- Electronic Case Notes/Reports
- Evidence Processing Documentation
- Peer Verification
- Secure Digital Image Management

LATENTWORKS Meets All Forensic Digital Imaging Standards

With the recently released NAS report entitled “Strengthening Forensic Science in the United States: A Path Forward”, there is a consensus that a better model for processing and documenting latent print comparison is not only desirable but necessary.

SWGFAST recommends documentation concurrent with the examination and recognizes an electronic system record as the Case Record. LATENTWORKS supports real time, simultaneous documentation of the analysis process.

LATENTWORKS allows for the annotation of images and auto generation of case notes and final reports with narratives. Electronic file folders can be deemed as part of the case record in agency SOPs. LATENTWORKS’ data field sets, case notes, reports analysis documentation and markups all become part of the case record.

LATENTWORKS has been validated for use in a forensic lab and all tests and examinations performed using the software in labs around the country have provided evidence that LATENTWORKS produces consistently reliable results.

LATENTWORKS meets and exceeds the SWGIT recommendations. LATENTWORKS utilizes a networked database server with auto backup and image redundancy.

SUPERVISOR MANAGEMENT

Verification Management
Analysis Management
AFIS Submission Management

DISTRIBUTED LATENT WORKFLOW

Basic Case Information
Evidence Processing Documentation
ACE-V Latent Analysis
AFIS Review
Verification Process - Digital Signatures
Exemplar Documentation
Electronic Comparison Documentation

EMBEDDED COMPARISON WORKSPACE

Contemporaneous Note-taking
Anchoring Charting Tools
Auto Sizing and Comparison
Image Optimization Tools
Create Multiple Latent Comparison Templates
Live Comparison Support

DEPARTMENT COLLABORATION

Blind Verification
Conflict Resolution
Multi-agency Review and Verification

LIVE COMPARISON MODULE

Comparison Workspace Templates
High Resolution Live Video Display

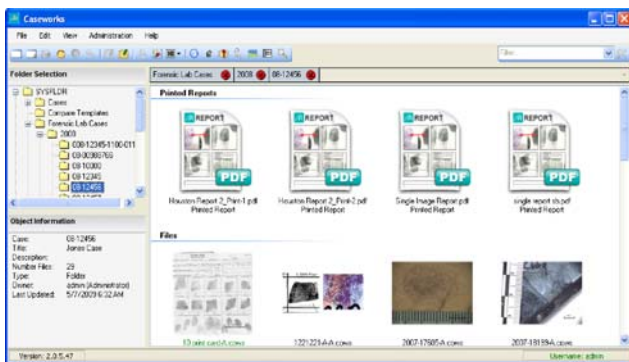
PRINTING AND CASE REPORTING

Electronic Case Notes
Automated Report Engine
Multiple Reports

LATENTWORKS Database Overview

LATENTWORKS is a secure database with flexible user access and powerful security controls. LATENTWORKS promotes consistent imaging workflow policies and procedures. LATENTWORKS was built in collaboration with forensic experts to meet the specific requirements of forensic labs and law enforcement agencies. Users always have full access to images within the database and can export original and marked images, singularly or entire case, for discovery, archive, etc.

LATENTWORKS also offers a file server storage option which allows agencies to store assets in the database, on a file server or a combination of both. This option allows for handling very large files and for ease of server management.



LATENTWORKS Visual Directory

Client/Server Case Digital Asset Management

LATENTWORKS offers a familiar and flexible structure to meet your agency's asset management needs. Configure the software to best fit your agency's workflow. Features include: asset acquisition, tracking, authority settings, field set administration and naming policies (compatible with Microsoft SQL and Oracle).

The LATENTWORKS database links custom information to a user, folder, or individual file. Users can search this data to find relationships between assets that reside in different cases or across different years.

Data can be divided into multiple folders and catalogs, each with independently configured security structures and naming conventions.

LATENTWORKS accepts all digital assets including RAW images, PDF documents, digital audio and video files along with the standard image formats tif, jpg, bmp and all other digital image formats. LATENTWORKS maintains digital image integrity, maintaining a full image history and reporting module for all digital enhancements and chain of custody. The original image is never altered.

LATENTWORKS Security

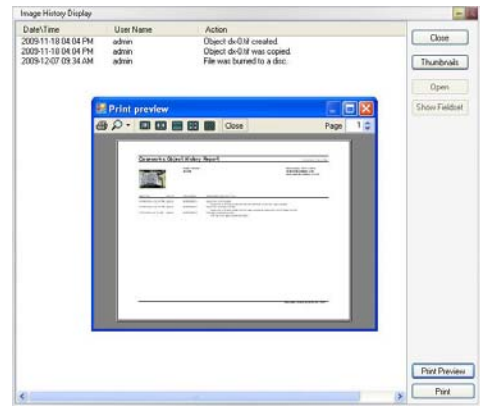
LATENTWORKS meets forensic and legal requirements and guidelines for testimony in court. Original images, once entered into the system, cannot be altered. All enhancements and markups are automatically saved as overlay versions of the original image and users can access any version as desired.

Security Controls

LATENTWORKS ensures that the integrity of all case related digital assets are secure. User authority levels are flexible and can be configured to provide either group or user access rights. This makes it easy to set up and enforce agency policies without micro-management and constant user supervision.

When an asset is imported into the database, LATENTWORKS verifies that the imported item is the same as the item in the database, using hash sums.

A complete set of administrative controls allows agency security policies to be set up and enforced. Users control access at the group or user level or apply it to specific images or folders. Further, a comprehensive set of feature authorities allows administrators to specify features that individual groups or users can access.

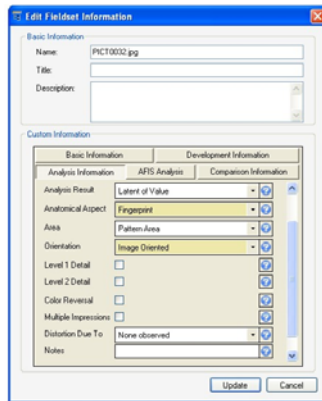


LATENTWORKS tracks image versions, automatically linking a modified image with its unalterable original, regardless of how many changes occur. Image history can be automatically printed or converted to a pdf file via built-in reports.

Latent Print Specialized Data Forms

Working in parallel with the comparison workspace, workflow data entry forms provide step-by-step entry of data related to each latent image analyzed and its relationship to each exemplar.

This data tracking process allows the comparison of multiple latent prints to multiple exemplars with built-in verification. All of the data is automatically linked to the automated reports which leads the way to a fluid ACE-V documentation process.



Messaging and Notification

LATENTWORKS has built-in mail and request services which allow for simple and effective task management and case assignment. Messages are very much like email - they can be sent from a user to any number of other users. The recipients are alerted when the messages arrive or when they next log into the system. Files or folders can be attached to any message, as "links" to the actual files in the database, taking up very little database space. Security is always enforced for these attachments.

LATENTWORKS also allows an administrator or supervisor to assign requests with specific due dates. Notifications - automatic messages - are sent to update all appropriate parties when the status of a task changes. The user who assigned the request can go back at a later date and review, reassign, or modify them. Common messages and requests can be created as "templates" and re-used numerous times.

When a user signals they have completed a task on a file (via the file data), they can be presented a link that will allow them to instantly send their supervisor a message.

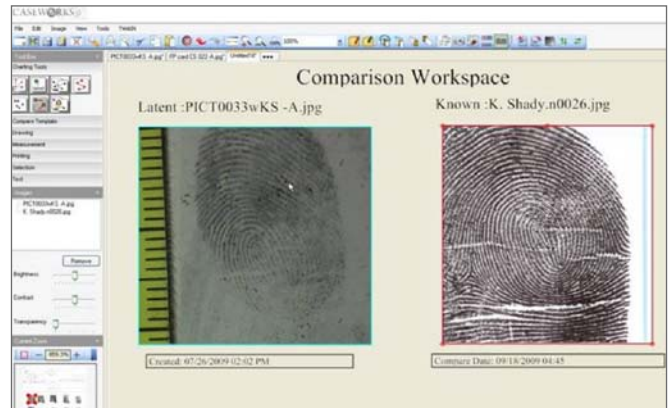
This is a very effective way to manage and assign requests in a complete messaging workflow solution.



Comparison Workspace Templates and Graphic Tools

Our innovative comparison workspace templates are designed to enhance the ease and efficiency of the onscreen comparison process. These "predefined" workspaces allow multiple pre-sets for image data, display size, position of the images and the tools to quickly drag and drop images for high volume of comparisons. All templates are fully customizable to meet each user's comparison methodology.

The two-step calibration tools allow users to calibrate multiple images on a single workspace and size them to a 1:1 relationship. An embedded charting engine allows analysts to highlight key latent characteristics all within the comparison workspace.



Workspace Templates

Latent Print Workflow

LATENTWORKS provides a group of specialized tools and features specifically for latent identification documentation and comparative analysis. This provides a systematic network-based software structure which automates the natural steps in a latent print workflow process. This standardizes documentation practices between examiners and provides overall consistency throughout the latent department.

LATENTWORKS provides:

- Contemporaneous ACE-V Documentation
- Simple side-by-side onscreen comparison
- Documentation and charting of key latent characteristics
- Automated case notes
- Messaging/Notification
- Verification
- Automatic Report generation
- AFIS Submission
- NIST Viewer

Latent Print Reporting Engine

LATENTWORKS' reporting engine allows agencies to create multiple custom reports. Reports display any configuration of data tracked in the database including, case information, image information, user information, etc.

The summary report compiles data within a case or across folders to produce your case notes summary report. The data automatically populates predefined case notes templates.

Users can print 1:1, single image reports, proof sheets, case notes and final reports. Send reports to a printer, PDF, or your LIMS.

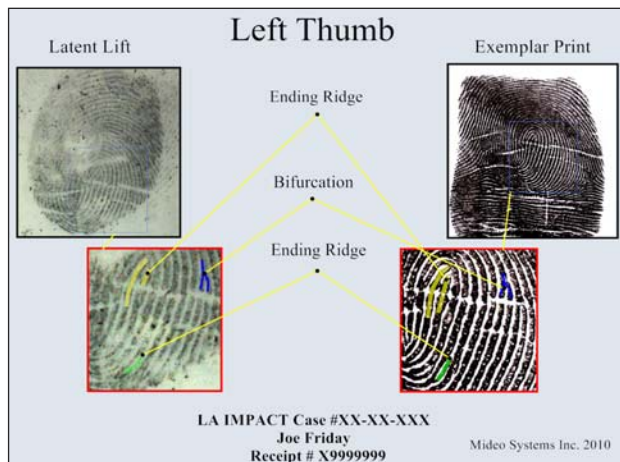
Comparison Summary - Case Notes				Case: 0003			
Printed By: admin				Exam Date: 02/10/2010 04:47 PM			
Location: 110 Maple Street Los Angeles				Investigator: Rob Rhyman			
Date Developed: 01/15/2010		Developed By: Bob Mark		Lift Count: 7			
Unique ID	Location Details	AFIS	ID	Unique ID	Location Details	AFIS	ID
233-001-2	Near the sink	N	X				
233-001-4	The glass patio door	N	X				
233-001-3	In the hall by the bathroom	N					
233-001-1	Kitchen Counter	Y					
233-001-5	The front door knob	N	X				
12-1154-01B	From the counter in the kitchen	Y	X				
12-1154-01A	From the counter in the kitchen	Y	X				
Exemplars Compared	ID #	S/V	Origin	Latents Identified			
Albert Eadens	32833	S	AFIS	233-001-2 (RT)			
Worlis Nightengale	06/15/1978	S	AFIS	233-094-4 (LL)			
John Walleye	0041-1541	S	AFIS	233-001-4 (LI), 12-1154-01B (LR)			
Orinza Latif	05/14/1987	S	Crime Scene	233-001-5 (LT), 12-1154-01A (RM)			
Jamiston Wothers	02/15/1981	V	Crime Scene				

Printed: 02/15/2010 04:18 PM Comparison Notes Version 1 Page: 2

Create Court Charts

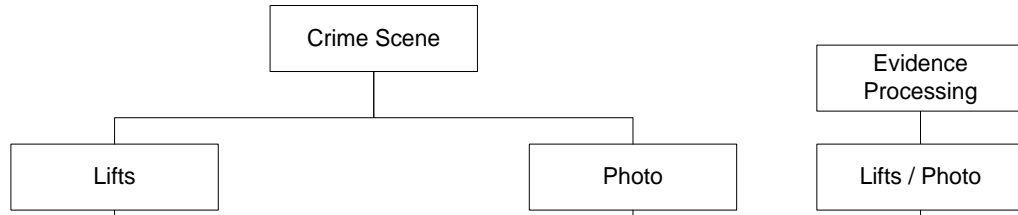
LATENTWORKS contains all the tools from the most popular desktop publishing programs, allowing users to easily and quickly create professional looking charts for court.

All images and associated data can be automatically pulled from the database, saving time and eliminating errors. LATENTWORKS uses vector graphics tools so that a file can be enlarged without losing clarity.



DIGITAL LATENT PRINT WORKFLOW

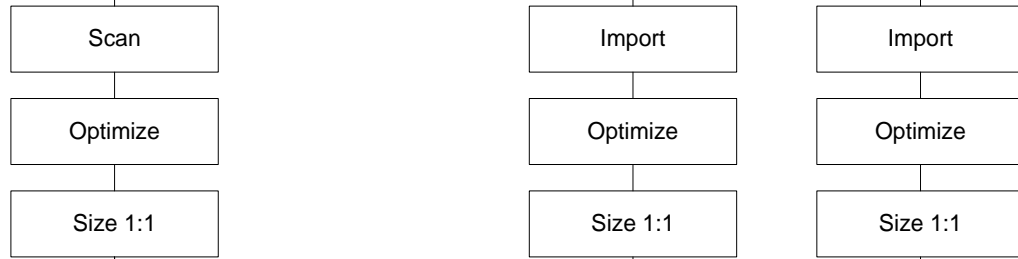
Acquisition



FULL DIGITAL

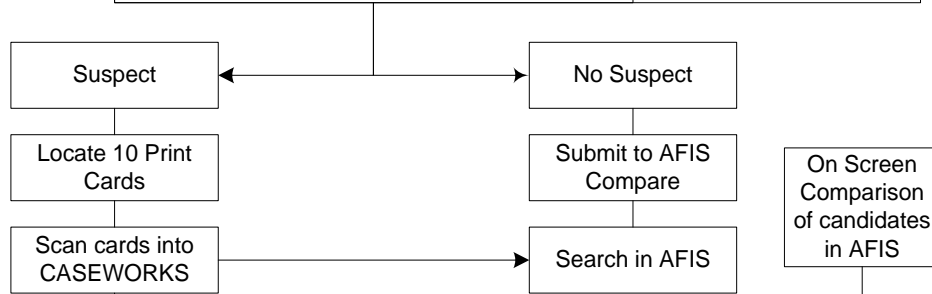
PARTIAL DIGITAL

Enhancement



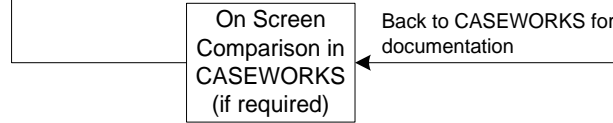
X

Known Sample Acquisition



X

Comparison



X

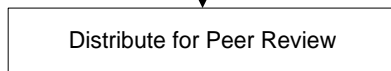
Documentation (ACE-V)



X

X

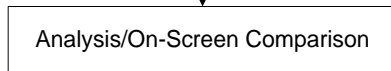
Peer Review Messaging



X

X

Peer Documentation



Final Report



X

X

IT Considerations

General Requirements:

- Microsoft SQL server 2000 or later OR Oracle 10g or later installed on the imaging server
Note: If utilizing Oracle the Oracle client must be configured on each workstation
- Data ports for each computer (wireless connections are not recommended due to the relatively low data transfer rate)
- Each workstation configured with local "Power User" authority for all CASEWORKS users (Required to utilize capture cameras)
- If "disk caching" is enabled all CASEWORKS users must have read/write authority for the C: drive.

CASEWORKS' database holds all images in tables and as such they are not directly viewable outside the application, therefore image security and integrity are greater than that of a file system. Additionally, image hash totals can be generated to validate that an exported image is identical to its database parent.

Hardware Requirements

Server Recommendations:

Rack Mount Server
SR2400 700W Redundant Power Supply
Intel Quad Processor
4GB RAM
4-1TB SATA or SAS drives
RAID 5 with controller
Smart UPS 1000
CD/DVD READ WRITER
Battery Backup
Integrated Intel PCI 10/100/1000 Twisted Pair Ethernet
Microsoft Windows 2003 Server with appropriate user licenses

OS: Windows Server 2005 and 2008. The number of Client Access licenses (CAL's) are determined by the number of users.

Capacity: the hard drive capacity is directly related to total daily image capture loading and could be lowered or increased dependent upon the specific site.

Storage space is based on the number of images you will be storing over a defined period of time. JPG images taken with a digital camera are typically 3-5MB each but may exceed 80MB each. TIFF images are typically 5-10MB each but may exceed 100MB each.

Note: If your server is configured with RAID, you will need to take the space lost (usually about ¼ of the total), into account.

Note: A Web Server is required for the Web-based Viewer/Printer

Client Computers

Minimum Computer Requirements:

80GB Hard Drive
2 GB memory (RAM)
Graphics card with 512 MB RAM
100/1000 Network Card
USB 2.0 Interfaces
Universal Smart Card Reader
CD/DVD Read/Writer Combo
Wireless Keyboard and Mouse
OS: Windows XP or Windows 7

Network

- All client computers must be connected to the network and be able to access the server
- All client users must have read/write and public permission to the server Database
- CASEWORKS supports Active Directory

Backup

Usually backups are specified by IT staff according to their general SOP's. We recommend weekly full backups with incremental backups each day using SQL Manager.

Backup hardware:

We recommend on-site near line backup to an external hard drive and then to a tape drive for safe storage off-site.

Archive

CASEWORKS provides two Archive options

1. Full archive which removes the images from the database leaving a thumbnail. This would be used when cases are closed and are ready to be taken off-line.
2. Partial archive which leaves the image in the database and preserves a copy off-line.

Archives can be created by folder, subfolder or image. Users can archive by folder or by image and contain all data including history and metadata associated with an image. The system audit shows what has been archived and image integrity is validated utilizing hash totals.

Database Information

CASEWORKS utilizes an SQL Database running on MSSQL Server or Oracle platform. It is a database that can support thousands of concurrent users.

CASEWORKS' database holds all images in tables and as such they are not directly viewable outside the application therefore image security and integrity are greater than that of a file system. Additionally image hash totals can be generated to validate that an exported image is identical to its database parent.



MODULES AND PLUG-INS

AFIS Interface

Sizing and Submission of Latents with Demographics
Retrieve NIST Card for Comparison

Photo Lab Workflow

LATENTWORKS has multiple features to handle all digital evidence from all areas of the laboratory. Our Photo Lab KIOSK module was built to manage large volumes of digital downloads while providing easy-to-use tools for organization, burning to CD or DVD and printing proof sheet reports.

- Asynchronous Upload
- Burn CD/DVD
- Print Proof Sheets and Reports
- Review Sessions

LIMS Interface Module

LATENTWORKS seamlessly interfaces the most popular forensic LIMS and AFIS systems for direct submissions.

- LIMS Interface API
- JusticeTrax
- Porter Lee
- RJ LEE

Latent Print Training

- Deliver Skills Training
- Course Authoring Tools
- Auto Grading
- Continuous Review
- Test Question Randomization
- Transfer of Corporate Knowledge

Web Viewer/Printer Module

The LATENTWORKS Web Viewer/Printer module provides secure access to case data from remote locations via the Internet. Customizable security models from LATENTWORKS automatically control user access for a streamlined workflow.

Any authorized user, e.g. investigators, detectives, district attorneys or other agency representatives can have immediate access to case information. Remote users are able to easily locate the case they wish to view or print.

Photoshop Plug-in

- Automatically Maintains Photoshop History
- Safely Open and Edit Case Images
- Embeds Photoshop History into Audit report

STAR NETWORK

- Link Multiple Servers
- User Definable Server Replication
- Bandwidth Management
- Set Time and Volume of Data Transfer
- Simplify Management of Multiple Servers

