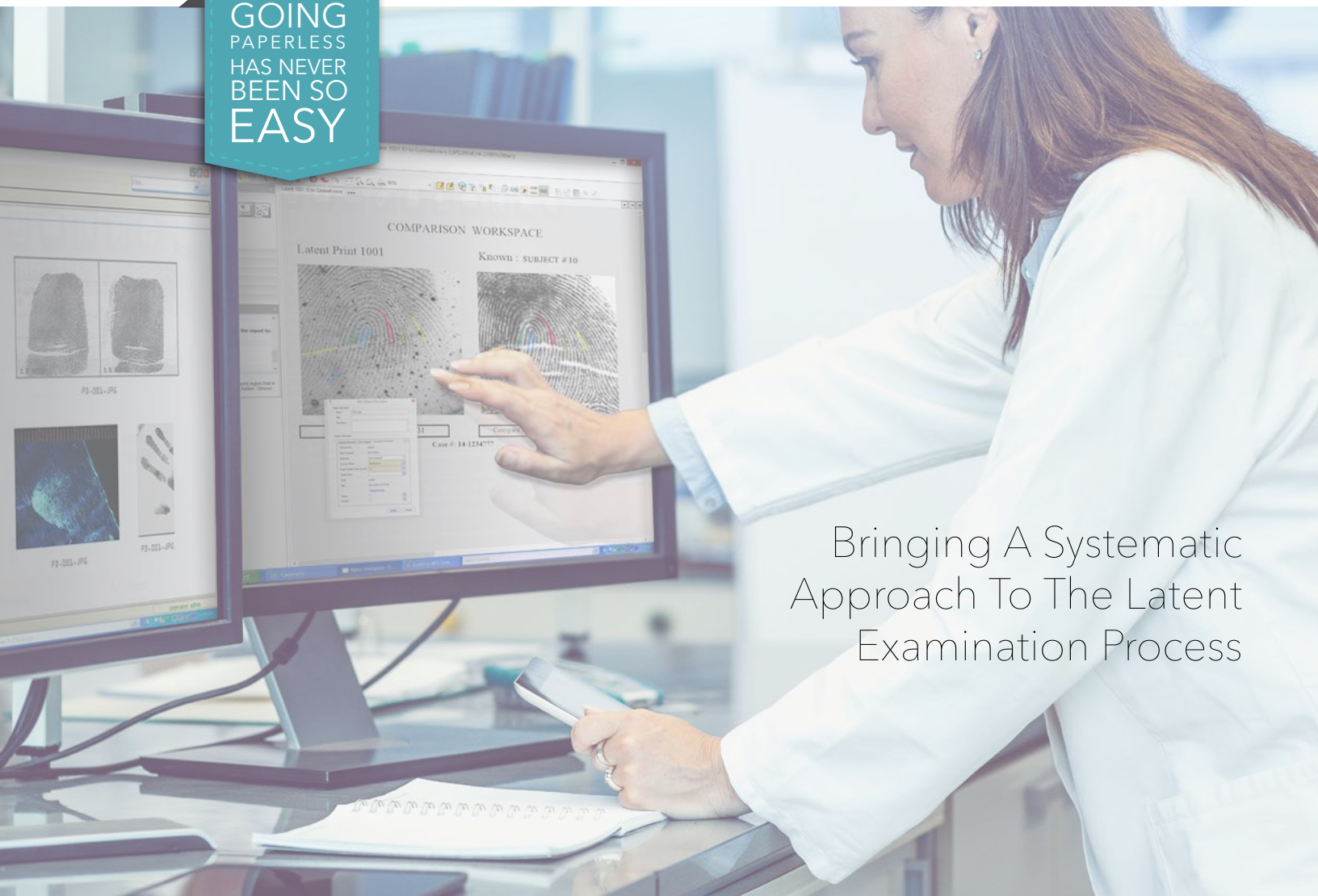


mideo
LATENTWORKS
e-LATENT CASE MANAGEMENT

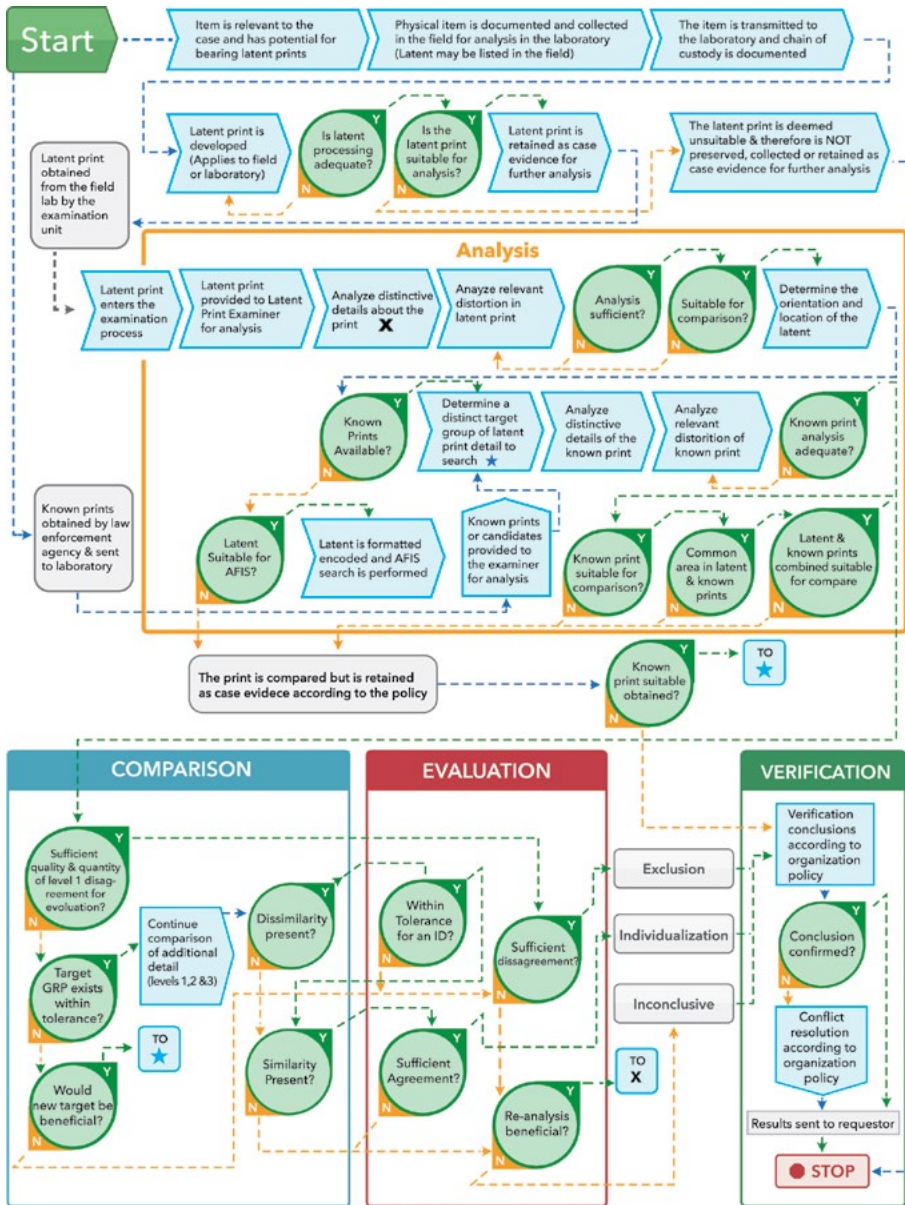


GOING
PAPERLESS
HAS NEVER
BEEN SO
EASY



Bringing A Systematic
Approach To The Latent
Examination Process

Latent Examination Process



LatentWorks Systematic Infrastructure

Mideo LatentWorks e-Latent Case Management Software provides all of the necessary tools for an agency to transform its entire process from an inefficient paper-based process to a systematic electronic/paperless process for latent examination. LatentWorks provides a group of specialized tools and features specifically for latent identification documentation and comparative analysis. This enterprise software automates the natural steps in a latent print workflow process which Standardizes documentation practices among examiners and provides overall consistency throughout

Latents Arrive at Lab...

- Of Sufficient Quality
- Submitted to AFIS
- Known Print Obtained
- Verification
- Confirmed Match
- Case...

e-Latent Case Management

Mideo LatentWorks e-Latent Case Management Software provides all of the necessary tools for an agency to transform its entire process from an inefficient paper-based process to a systematic electronic/paperless latent examination process. LatentWorks provides a group of specialized tools and features specifically for latent identification documentation and comparative analysis. This enterprise software automates the natural steps in a latent print workflow process which standardizes documentation practices among examiners & provides overall consistency throughout the latent department.

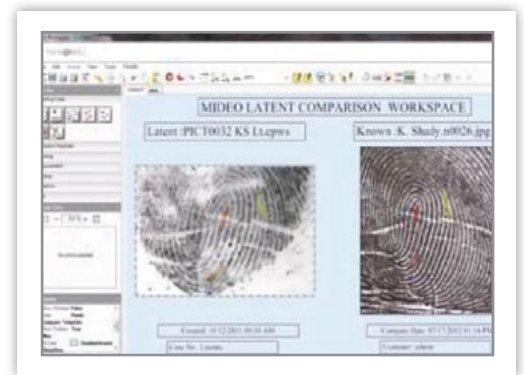


LatentWorks Provides:

- Contemporaneous ACE-V Documentation
- Simple side-by-side on-screen comparison
- Automated case notes
- Messaging/Notification
- Documentation and charting of key latent characteristics
- Verification
- Report generation
- AFIS Submission
- NIST Viewer

Comparison Workspace Templates and Graphics Tools

Our innovative comparison workspace templates are designed to enhance the ease and efficiency of the onscreen comparison process. These "predefined" workspaces allow multiple pre-sets for image data, display size, position of the images and the tools to quickly drag and drop images for high volume of comparisons. All templates are fully customizable to meet each user's comparison methodology. The two-step calibration tools allow users to calibrate multiple images on a single workspace and size them to a 1:1 relationship. An embedded charting engine allows analysts to highlight key latent characteristics all within the comparison workspace.



Comparison Summary - Case Notes						Case: 0003	
Printed By: admin						Exam Date: 02/19/2010 04:47 PM	
Location: 110 Maple Street, Los Angeles						Investigator: Rob Elysson	
Date Developed: 01/15/2010						AFIS Count: 7	
Developed By: Bob Mark							
Unique ID	Location Details	AFIS	ID	Unique ID	Location Details	AFIS	ID
203-001-2	Next to sink	N	X				
203-001-4	The glass patio door	N	X				
203-001-3	In the hall by the bathroom	N	X				
203-001-1	Kitchen Counter	Y	X				
203-001-5	The front door knob	N	X				
10-1204-008	Prints for control for the kitchen	Y	X				
10-1204-00A	Prints for control for the kitchen	Y	X				
Exemplars Compared	ID #	SV	Origin	Latents Identified			
Albert Hubert	0203	N	AFIS	203-001-2 (R7)			
Wally Hightman	96103079	N	AFIS	203-001-4 (L2)			
John Williams	40011001	N	AFIS	203-001-4 (L2), 10-1204-008 (L2)			
George LaFol	05140987	N	Other Source	203-001-2 (L7), 10-1204-008 (L2)			
Latent Unknown	02101981	Y	Other Source				

Latent Print Reporting Engine

LatentWorks reporting engine allows agencies to create multiple custom reports. Reports display any configuration of data tracked in the database including, case, image, and user information etc. The summary report compiles data within a case or across folders to produce your case notes summary report. The data automatically populates predefined case notes templates. Users can print 1:1, single image reports, proof sheets, case notes and final reports which can be sent to a printer, a pdf or to your LIMS.

Latent Print Specialized Data Form

Working in parallel with the comparison workspace, workflow data entry forms provide step-by-step entry of data related to each latent image analyzed and its relationship to each exemplar. This data tracking process allows the comparison of multiple latent prints to multiple exemplars with built-in verification. All of the data is automatically linked to the reports which leads the way to a fluid ACE-V documentation process. These workforms provide the ability to create and distribute workflow process, between receiving / processing evidence and latent examination.



mideo
LATENTWORKS
e-LATENT CASE MANAGEMENT

Bringing A Systematic Approach To The Latent Examination Process

OFFERING EXTENSIVE SOFTWARE & IMAGING
SOLUTIONS FOR THE FORENSIC COMMUNITY

Mideo Systems / 15177 Springdale St. Huntington Beach, CA 92649
email: sales@mideosystems.com / tel: + 800 258 1066
www.mideosystems.com

